

Dunbar Community Center

Little Rock Stormwater Manual Update

Public Meeting

May 17th, 2023

Agenda

PUBLIC MEETING

- Overview of Project
- Website and Survey
- Stakeholder Survey Results
- Planned Changes

WHAT IS A STORMWATER MANAGEMENT MANUAL?

CITY OF LITTLE ROCK



SEPTEMBER, 2016 UPDATE

STORMWATER MANAGEMENT AND DRAINAGE MANUAL

PUBLIC WORKS DEPARTMENT
701 WEST MARKHAM STREET
LITTLE ROCK, ARKANSAS 72201

XXXXXXXXXXXX
DECEMBER, 2007 UPDATE
XXXXXXXXXXXX

A stormwater management and drainage design manual (SWMDM) provides guidelines and standards for the design and construction of drainage systems within the city.

THE MANUAL ADDRESSES:



Public Projects and Private Development



Floodplain Management



Water Quality and Stream Protection



State and Federal Regulations and Permits



Construction Site Runoff and Erosion



WHY UPDATE?

Updates will make sure that the manual remains effective and adequately addresses future flood risk, new stormwater practices, and state & federal regulations.



The manual is a part of the City's policies and programs to reduce pollutants in compliance with the Municipal Separate Storm Sewer System (MS4) permit issued by ADEQ.



TO REDUCE FLOOD RISK

Require use of the latest technology, methodologies, and data



TO IMPROVE WATER QUALITY

Encourage use of low impact development (LID) and green infrastructure



TO PROTECT STREAMS

Provide additional resources on use of stormwater best management practices (BMPs)

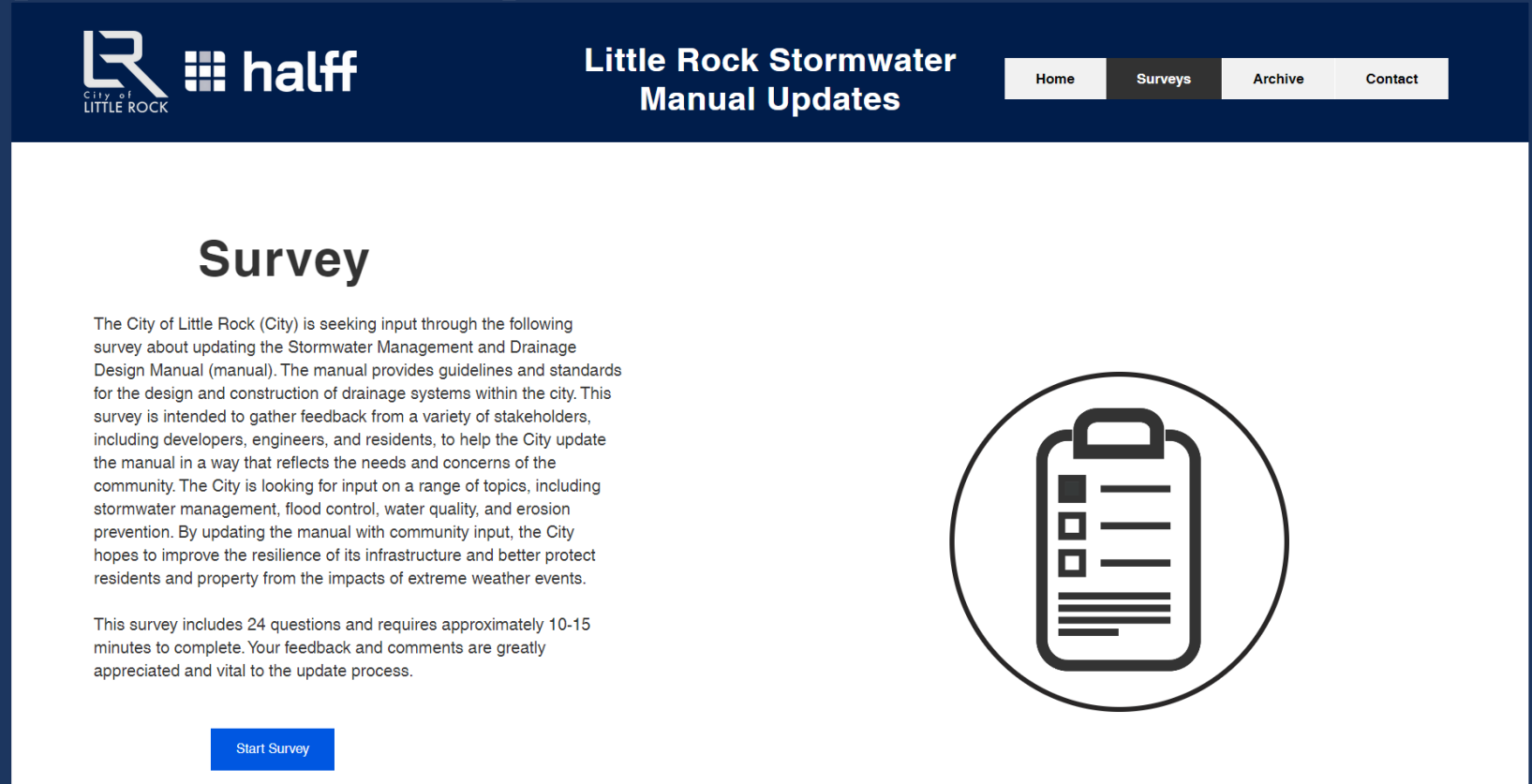
SWMM UPDATE PROCESS



WEBSITE AND SURVEY

The website provides updates on the process, a link to the survey, and upcoming public meeting information.

The purpose of the survey is to gather feedback from stakeholders to help the City update the manual in a way that reflects the needs and concerns of the community.



www.lrswwmanualupdate.com

SURVEY RESULTS

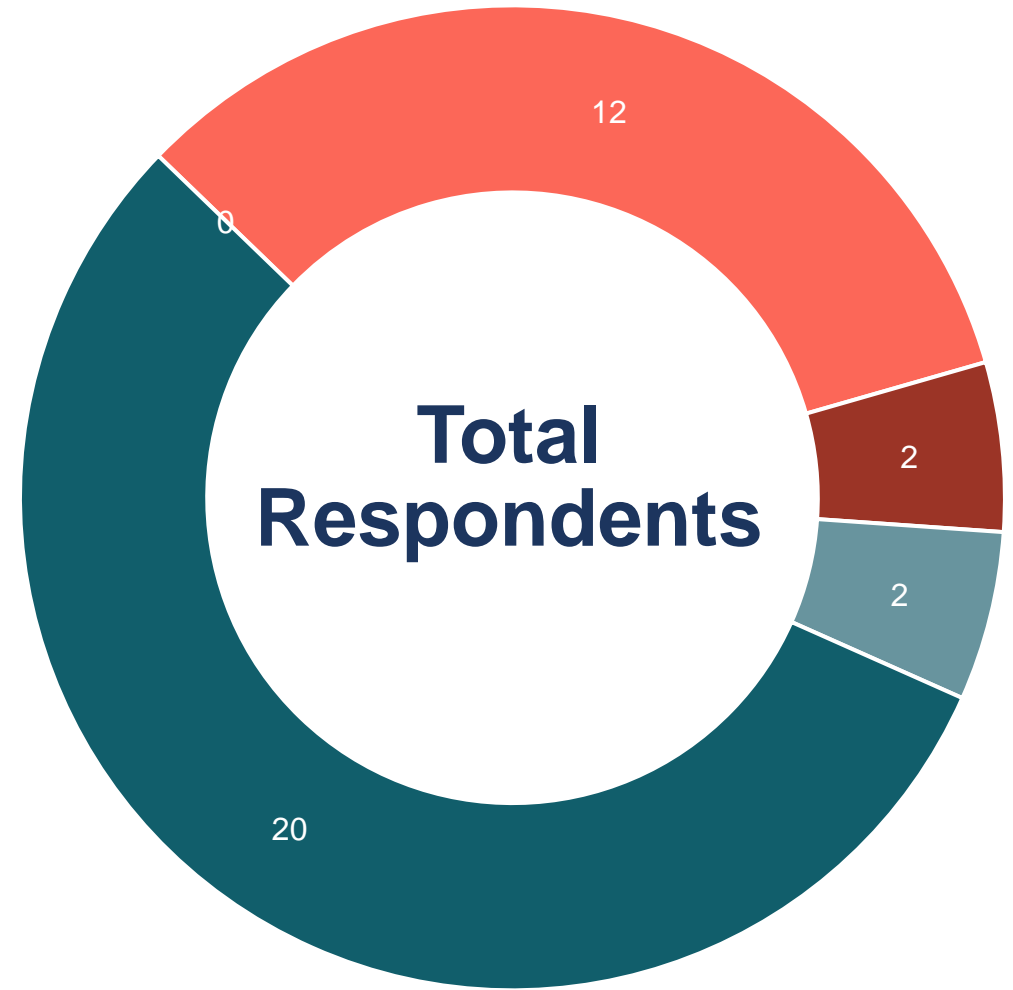
The current Little Rock Stormwater Management and Drainage Manual (LRSMDM) adequately addresses storm water management (flooding, street drainage, offsite impacts, water quality, stream protection, etc.)



“It is a much-needed update.”

“Never seen the manual”

“The current manual is hard to navigate”

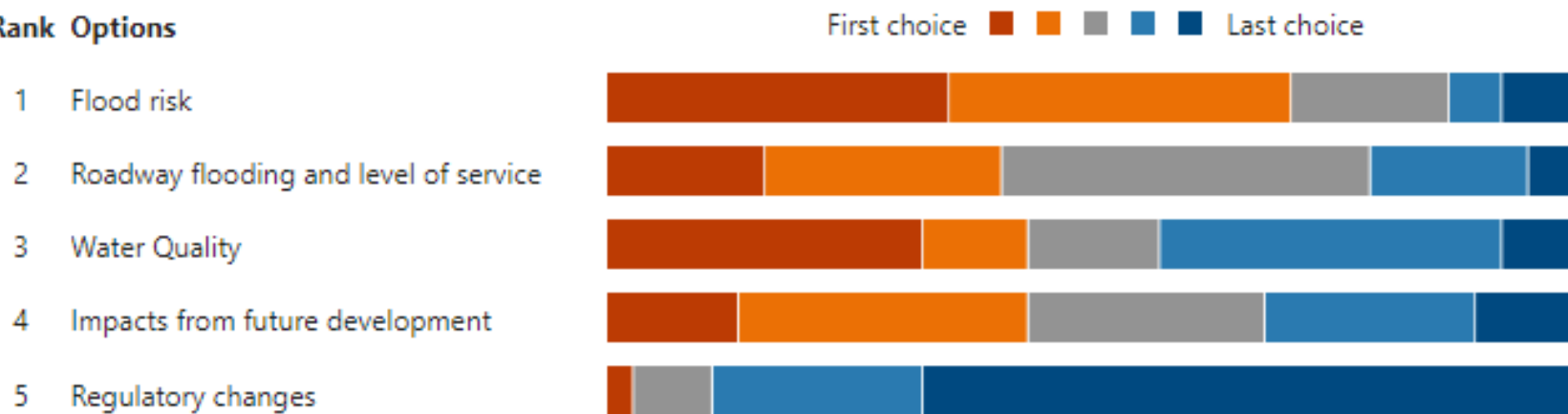


■ Developer ■ Engineer/Architect ■ Contractor ■ Government Employee ■ Local Resident

SURVEY RESULTS

What are your top concerns regarding stormwater management in Little Rock?

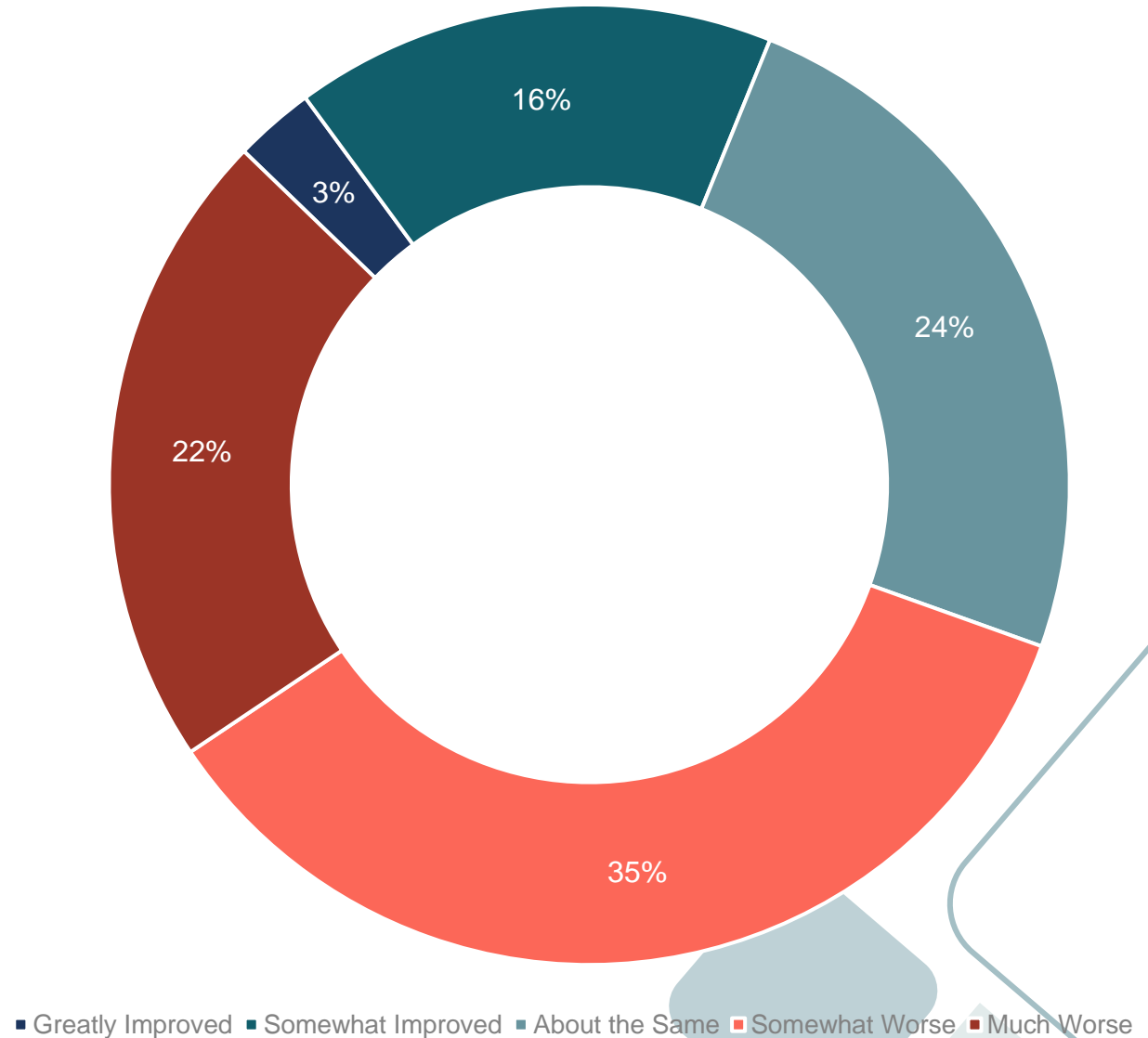
Rank Options



SURVEY RESULTS

Over time, do you feel that stormwater drainage in the City of Little Rock has improved, is worse, or is approximately the same?

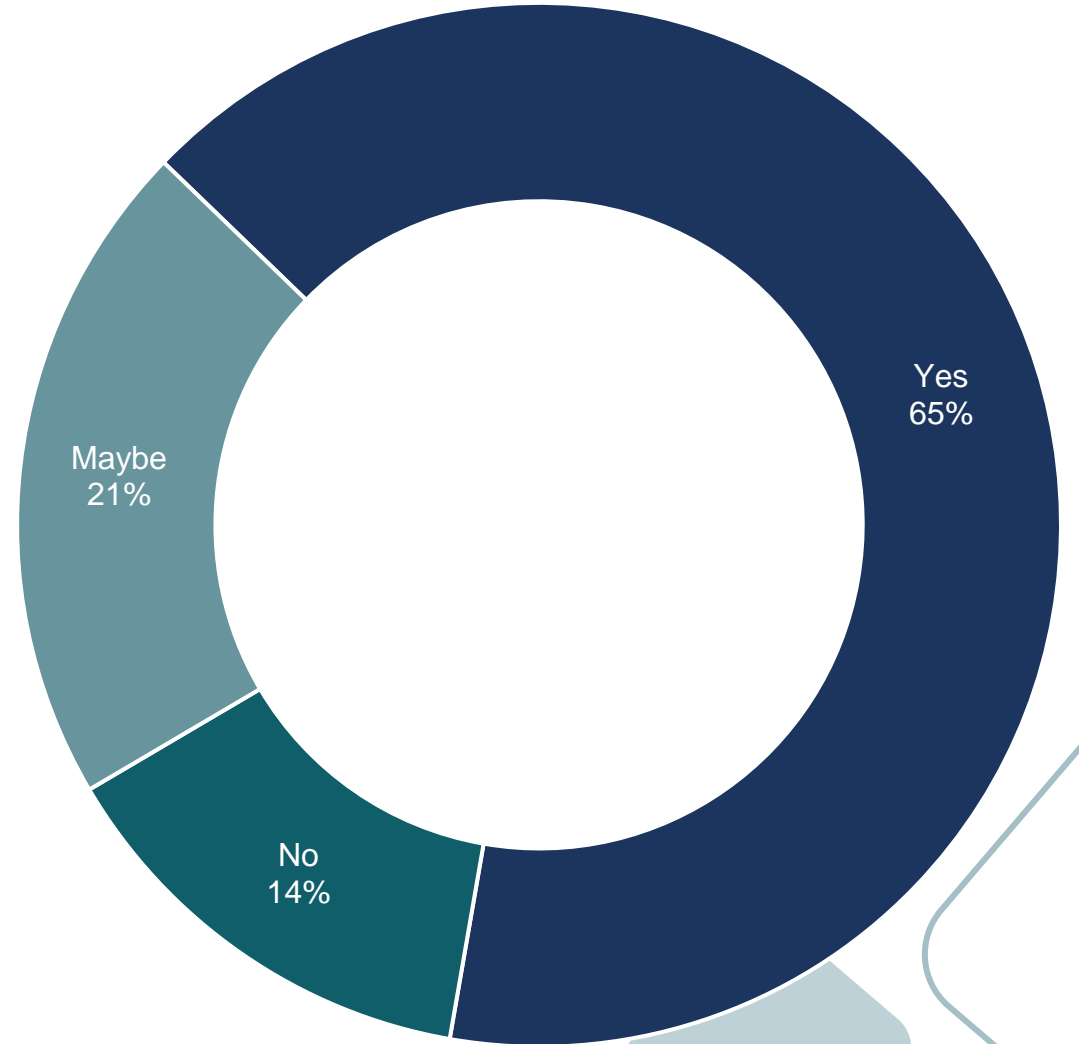
80% of Local Residents felt stormwater drainage has become Somewhat Worse or Much Worse



SURVEY RESULTS

In general, will design criteria that considers new measures such as future land use conditions, a higher standard for storm frequency, or water quality standards be supported by the community?

Majority of respondents support new criteria and standards.



PLANNED CHANGES

The City plans to overhaul the manual to improve the resilience of its infrastructure and better protect residents and property from the impacts of extreme weather events.

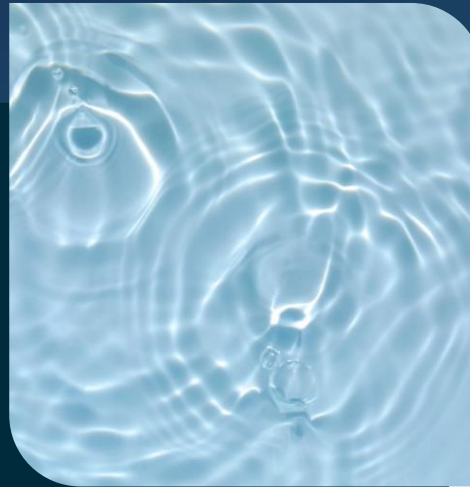
1



MODERNIZE

Streamline manual and improve readability and usability

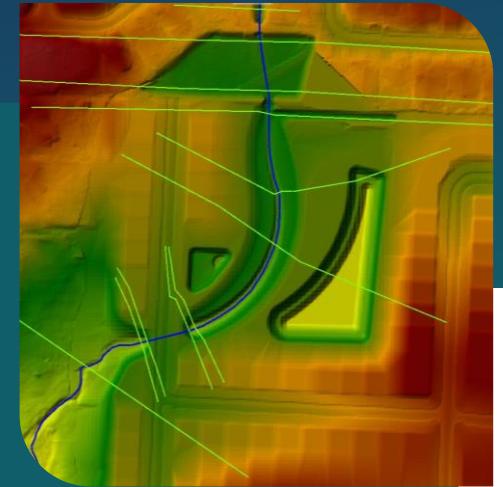
2



ADDRESS WQ

Include measures to remove pollutants and incentivize green infrastructure

3



UPDATE METHODS

Utilize latest methods and expand analysis of storm events and offsite impacts

GET IN TOUCH

Visit the website <https://www.lrsmanualupdate.com/> for the latest updates or contact us below.



Natalie Rogers

Water Resources Project
Manager

(501) 653-7522

nRogers@halff.com

Miles Simmons

Water Resources Project
Manager

(501) 801-2685

mSimmons@halff.com



Jamie Collins

Director Planning and
Development

(501) 371-4790

gCollins@littlerock.gov

